



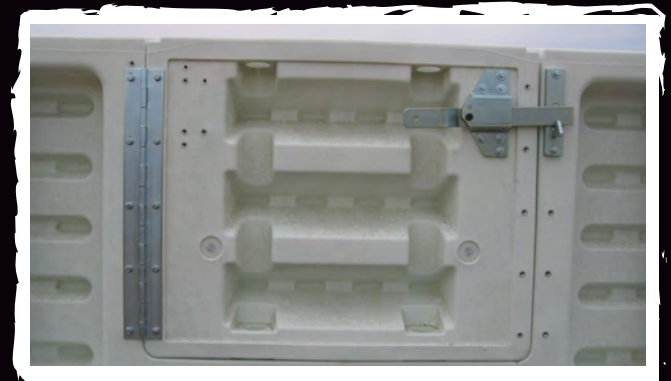
ProWall™ - Ice

Introducing...

ProWall™ - Ice Dasherboards - the permanent or portable alternative to outdoor wood ice hockey dasherboards. After seeing other outdoor plastic rinks fail when using a low linear density polyethylene (LLDPE) in below-freezing temperatures, ProWall-Ice was developed using a special ExxonMobil crosslinkable rotational molding resin named Paxon 7000. Slightly whiter in color than traditional resins, the ProWall-Ice panels should be specified when playing temps will routinely fall below 32 degrees F (0 degrees C). Paxon 7000 resins were designed where superior toughness, thermal impact and notch failure resistance are needed.

Advantages

- Tougher and more durable than existing plastic hockey dasherboard products
- Assemble and install a full rink in less than one day
- Maintenance-free and no painting – ever!
- Three anchoring options – portable, semi-permanent or permanent
- “No-tool” connection mechanism
- Radius corners ranging from 42" radius up to 20 ft radius
- 50 connection points per 8 ft Straight Panel for added strength
- 34" x 96" advertising area
- 8" x 1/2" bumped out kickplate
- Upper containment materials include netting, chainlink fencing or acrylic
- Fill and drain holes in Portable Bracing Panels for easy anchoring
- 2 ft, 4 ft and 8 ft panels for maximum versatility
- Stacking features on 8 ft Straight panels for safe storage and transport
- Real hockey gate hardware
- Adjustable left- and right-swing gates



Call Us Now! 1-800-234-5522

6811 West Highway 13, Savage, Minnesota 55378 • www.beckerarena.com • info@beckerarena.com